

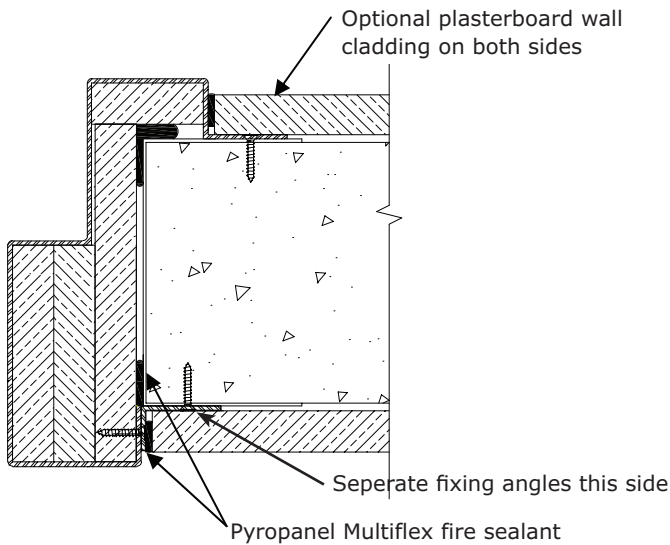
BUILDING IN DETAILS

Speedpanel walls (51, 64 & 78mm)

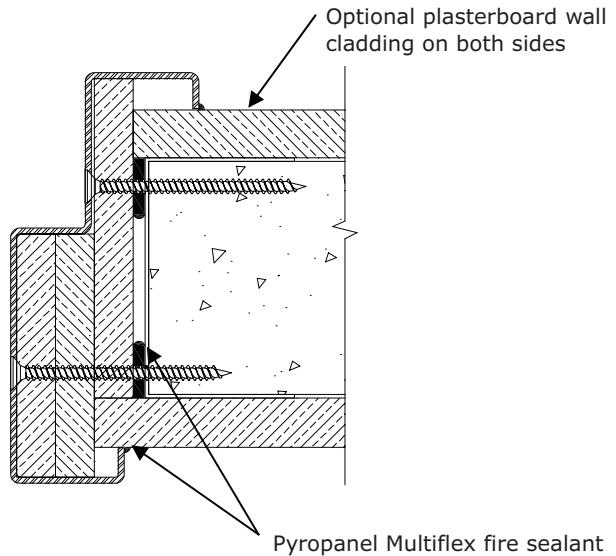
DESCRIPTION

Building in details showing the approved fixing methods for Speedpanel walls for up to 2 hours of fire rating (51mm = 1hr, 64mm = 1^{1/2} hrs, 78mm = 2hrs)

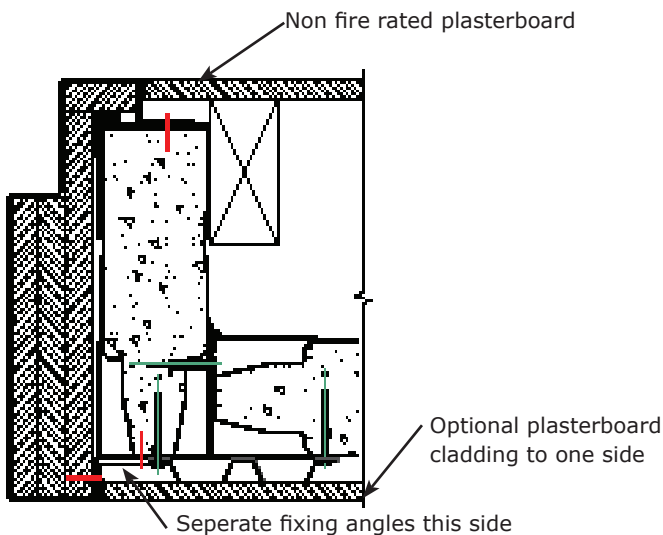
Slide-in frame options (Used when the frame is fixed to an opening in an existing wall)



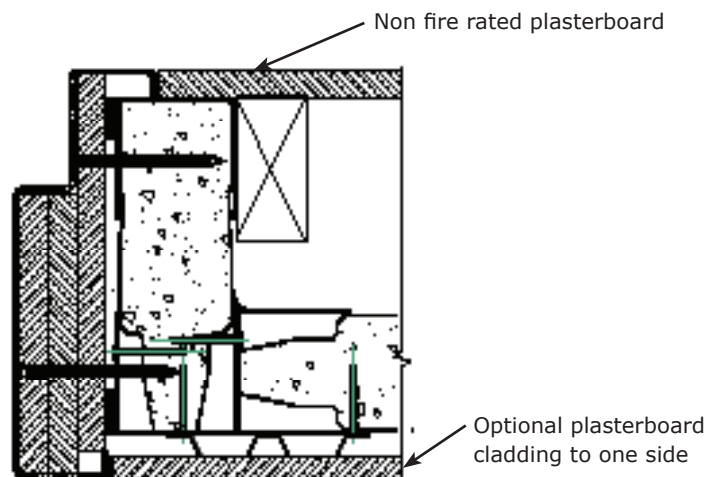
Slide-in steel frame, screw-fixed (nom. 400mm centres) into the wall faces with separate fixing angles on one side.



Slide-in steel frame, screw-fixed (nom. 400mm centres) through the rebate and jamb into the wall opening.



Slide-in steel frame, screw-fixed (nom. 400mm centres) into the wall faces with separate fixing angles on one side.



Slide-in steel frame, screw-fixed (nom. 400mm centres) through the rebate and jamb into the wall opening.

Pyropanel Developments Pty Ltd
Unit 1, 97 Lewis Rd, Wantirna South, Vic 3152
Ph: (03) 9837 8500 Fax: (03) 9837 8550
Email: sales@pyropanel.com.au
Web: www.pyropanel.com.au

Distributed by:
Holland Fire Doors & Windows
23 Saggart Field Rd, Minto, NSW, 2566
Ph: 9603 8500
Email: sales@hollandfiredoors.com.au

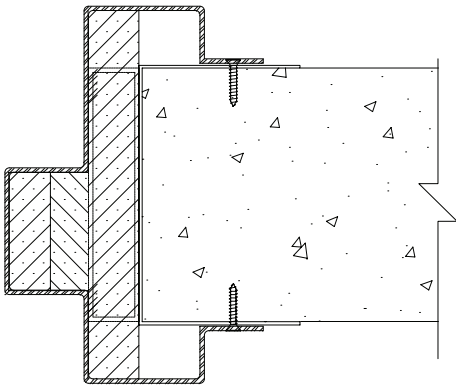
BUILDING IN DETAILS

Speedpanel walls (51, 64 & 78mm)

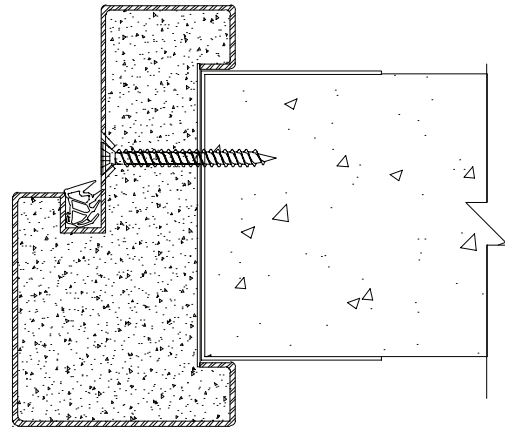
DESCRIPTION

Building in details showing the approved fixing methods for Speedpanel walls for up to 2 hours of fire rating (51mm = 1hr, 64mm = 1¹/₂ hrs & 78mm = 2hrs)

Built-in frame options (Used when the frame is built into the wall during wall installation)



Built-in steel frame, screw fixed (nom. 400mm centres) into the wall faces through the frame wings.



Built-in steel frame, screw fixed (nom. 400mm centres) to the wall opening through the frame rebate. Frame with plate welded at the back to enable easier back-grouting.

Pyropanel Developments Pty Ltd
Unit 1, 97 Lewis Rd, Wantirna South, Vic 3152
Ph: **(03) 9837 8500** Fax: (03) 9837 8550
Email: sales@pyropanel.com.au
Web: www.pyropanel.com.au

Distributed by:
Holland Fire Doors & Windows
23 Saggart Field Rd, Minto, NSW, 2566
Ph: **9603 8500**
Email: sales@hollandfiredoors.com.au

Pyropanel Developments has a policy of continuous improvement and reserves the right to change methods and specifications without notice.
Note: *The Tech Sheet is an uncontrolled document, If printed please refer to the Tech-Sheet on the website to check if this document is valid.*