

FIRE COLLARS

GV Fire Collar

DESCRIPTION

A two part plastic fire collar containing an intumescent material designed to crush the plastic pipe under fire conditions thus sealing against the passage of flame and hot gases for up to 4 hours. Suitable for most plastics in floors, and masonry and lightweight walls. Also approved for floor waste applications (50mm & 80mm only).

APPLICATIONS

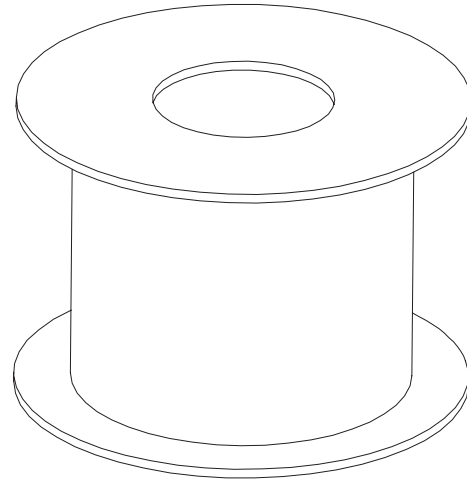
Especially designed for masonry walls and plaster walls this collar provides a quick and cost effective solution for fire rating of plastic pipes in high-rise residential construction, flats, townhouses, apartments, civil projects, health care and aged care facilities, offices, etc.

FEATURES

- Fully certified to Australian Standards AS1530.4 and AS4072.1 for up to 4 hours of fire rating
- 6 sizes service pipe sizes from 40-150mm (nom)
- Designed and approved for most brands of PP, HDPE, uPVC, PE, ABS.
- Also approved for floor waste applications (50mm & 80mm only)
- A cost effective fire stopping solution
- Adjustable pipe length from 90mm to 155mm to suit various wall thicknesses
- Tight fitting around pipe, which helps keep the pipe vertical during concrete pour, while also reducing smoke transfer.
- Built in slurry / smoke seal.
- 10 year warranty on intumescent material
- Australian made

INSTRUCTIONS

- Install as per instructions on following page
- Note:** GV collar can be cut in half for retrofit applications



GV Fire Collar

HOW TO SPECIFY

Eg, "Fire Collars to be Pyropanel "GV" fire collars , installed as per manufacturers instructions"

* denotes example - delete, change or specify as required

MODELS AVAILABLE

Model	Collar Name	To suit nominal pipe (mm)	Actual PVC pipe O.D (mm)	Collar opening	Collar width inc. flange	Collar height	Floor application
CLGV040	GV 40	40	43.1	45	124	83	uPVC, PP, PE, HDPE: -/240/240
CLGV050	GV 50	50	56	60	142	91	uPVC, PP, PE, HDPE: -/240/240 uPVC Floor waste: -/180/180
CLGV065	GV 65	65	69.1	70	154	81	uPVC, PP, PE, HDPE: -/240/240
CLGV080	GV 80	80	82.7	85	175	83	uPVC, PP, PE, HDPE: -/240/240 uPVC Floor waste: -/240/240
CLGV100	GV 100	100	110.4	115	203	88	uPVC, PP, PE, HDPE: -/240/240
CLGV150	GV 150	150	125	127	220	103	uPVC, PP, PE, HDPE: -/240/240

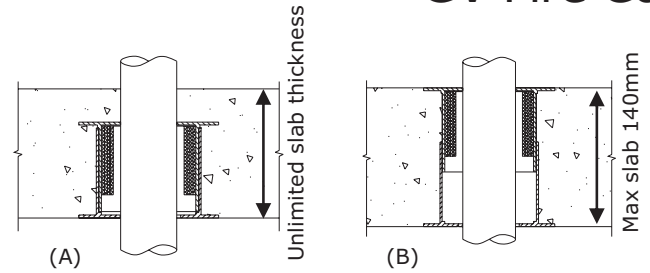
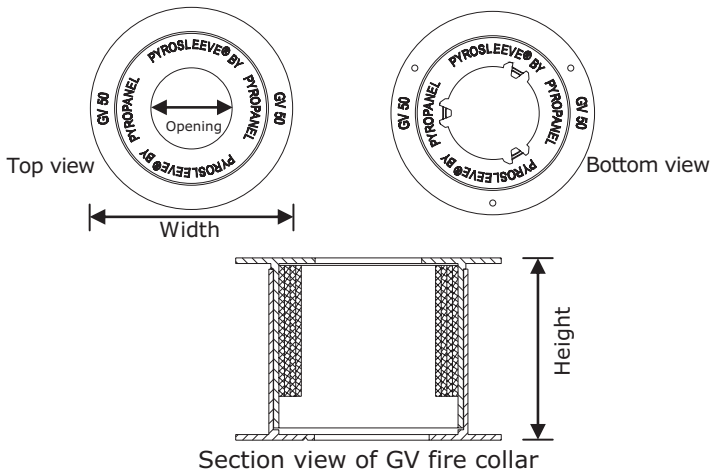
Pyropanel Developments Pty Ltd
 Unit 1, 97 Lewis Rd, Wantirna South, Vic 3152
 Ph: **(03) 9837 8500** Fax: (03) 9837 8550
 Email: sales@pyropanel.com.au
 Web: www.pyropanel.com.au

Distributed by:
Holland Fire Doors & Windows
 23 Saggart Field Rd, Minto, NSW, 2566
 Ph: **9603 8500**
 Email: sales@hollandfiredoors.com.au

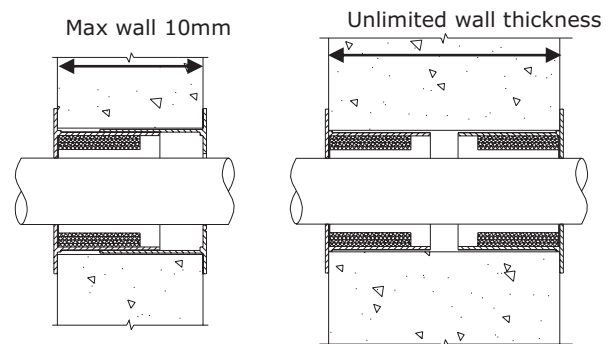
FIRE COLLARS

GV Fire Collar

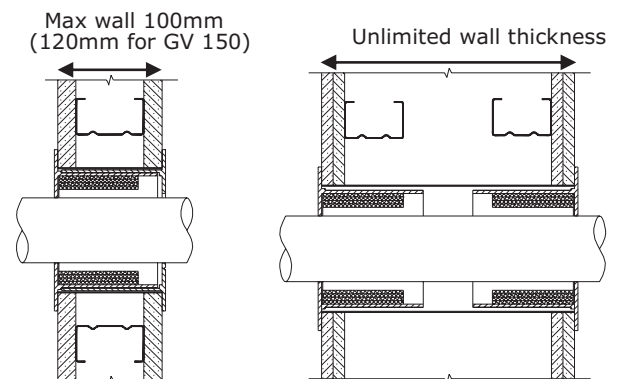
BUILDING IN DETAILS



Typical masonry floor application. For slab thicknesses less than 140mm, collar can be adjusted so that top of collar is level with top of slab (B). For thicknesses greater than 140mm, collar must be fully embedded in slab (A).



Typical masonry wall application. For wall thicknesses from 90mm to 150mm, a single GV can be used. For wall thicknesses greater than 150mm, a collar must be used on each side of the wall (trim collar length to suit if required).



Typical plaster wall application. A steel tube must be inserted to within 5 mm of each face of the wall. For wall thicknesses from 90mm to 100, a single GV can be used. For wall thicknesses greater than 100mm (120mm for GV150), a collar must be used on each side of the wall (trim collar length to suit if required). Where double studs are not connected or braced, collars must be located within 300mm of top, bottom, or edge of wall.

INSTRUCTIONS

Masonry Floor

- Fix collar to formwork and adjust height.
- Insert pipework, ensuring that the pipework enters the base of the collar.
- Pour concrete and remove formwork.
- Remove pipe locator tabs and insert elbow or additional pipe in to base of collar.

Masonry wall

- Create penetration hole.
- Insert single collar for walls up to 150mm, or two collars for walls greater than 150mm.
- Back fill with Pyropanel M4 mortar if penetration is oversized.
- Seal collar to wall using Pyropanel Multiflex fire rated sealant and steel masonry anchors.
- Remove pipe locator tabs and insert elbow or pipe.

Plaster wall

- Create penetration hole.
- Insert steel tube through wall ensuring that it finishes within 5mm of each face.
- Insert single collar for walls up to 100mm, or two collars for walls greater than 100mm (120mm for GV150).
- Seal collar to wall using Pyropanel Multiflex fire rated sealant and steel plasterboard anchors

Pyropanel Developments Pty Ltd

Unit 1, 97 Lewis Rd, Wantirna South, Vic 3152

Ph: (03) 9837 8500 Fax: (03) 9837 8550

Email: sales@pyropanel.com.au

Web: www.pyropanel.com.au

Distributed by:

Holland Fire Doors & Windows

23 Saggart Field Rd, Minto, NSW, 2566

Ph: 9603 8500

Email: sales@hollandfiredoors.com.au